



CENNZ Conference. QUEENSTOWN

FRIDAY 13TH !!!! October 2017



St John
Here for Life



St John

first to care

Keith Raymond

- ▶ Station Manager – 3 years
- ▶ Intensive Care Paramedic – 5 years
- ▶ Full time Ambulance Officer – 16 years
- ▶ Flight Medic – 12 years
- ▶ St John 23 years total....some as a cadet, some as a volunteer.
- ▶ Aspen Medical - Flight ICP.
- ▶ Ex Ski Patroller, Track Guide, First Aid Tutor, Film and Movie Health and Safety Advisor and Onset Medic.
- ▶ A dysfunctional presenter and technically challenged



I have Powerful friends!!



St John

first to care



I was youngonce upon a time...



St John

first to care

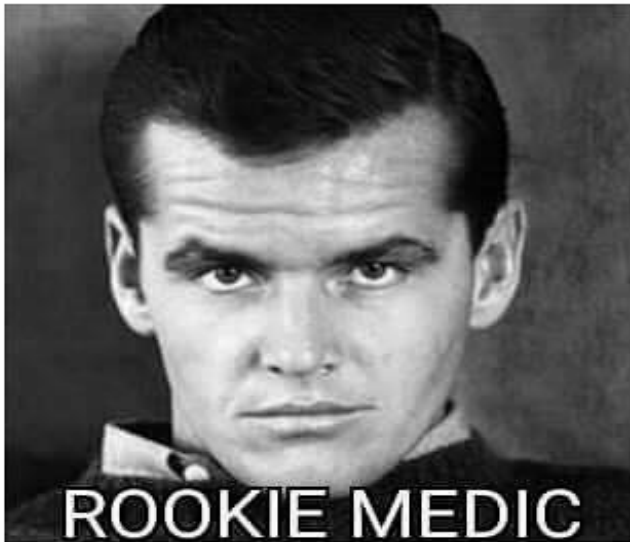


And now.....



St John

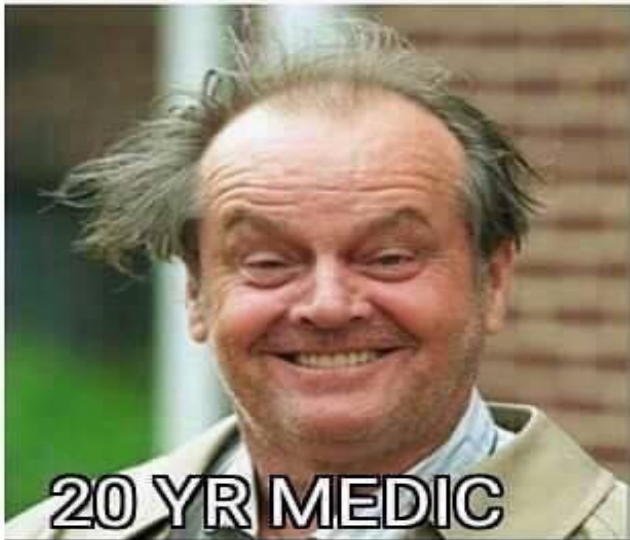
first to care



ROOKIE MEDIC



10 YR MEDIC



20 YR MEDIC



30 YR MEDIC





St John

first to care

St John QUEENSTOWN Resources

▶ Ambulance resources

- ▶ Queenstown
 - 2 x Front line emergency response ambulances
 - 2 x PTS vehicles
 - 2 x Specialised 4 wd access vehicles
 - 1 x Events vehicle

▶ Staffing

- 8 x Fulltime frontline staff
- 2 x PTS Officers
- 6 x Winter contract staff, part time
- 4 x Sumer events staff, part time.
- 25 x Volunteers



Skill Levels



St John

first to care





St John

first to care

Staffing Qualifications

- ▶ 5 x Full time (Intensive Care Paramedics) ICP's
- ▶ 2 x Fulltime Paramedics
- ▶ 1 x EMT
- ▶ 1 x Casual / Clinical ICP
- ▶ 2 x Casual Paramedics
- ▶ 15 x EMT volunteers
- ▶ 8 x First Responder Volunteers
- ▶ 10 x Heli qualified Medical Crewmen
- ▶ 1 x Station Manager



PARAMEDICS



What my friends think I do.



What my Mom thinks I do.



What the public thinks I do.



What my patients think I do.



What I think I do.



What I actually do.



St John

first to care

What Do We Do???

- ▶ More than a TAXI service?
- ▶ **Events / MCI's** such as
 - ▶ Queenstown Marathon 10,000 +
 - ▶ Motatapu
 - ▶ Rhythm and Alps
 - ▶ Highlands Motor sports
 - ▶ NZ Cricket
 - ▶ Cromwell Speedway
 - ▶ Gibbston Concert

Training “Drive to Survive”
Rural GP placement

Aero-medical Rescue and Response

Patient Transfer Service.



We've come a long way



St John

first to care





St John

first to care





St John

first to care





St John

first to care

Transport Sick and Injured Individuals with appropriate care, in a timely manner to ensure best possible outcomes.

- ▶ The best care and outcomes for any patient.
- ▶ In Queenstown....time can be a factor. Road vs Air?
- ▶ Involves forward planning.
- ▶ Destination Policy Plans
 - Stroke
 - Major Trauma
 - Spinal Cord Injury





St John

first to care

Patient Destinations

- ▶ The best treatment for the patient – what is most appropriate destination.
- ▶ Trauma Destination Policy – Dunedin , Invercargill
- Spinal Cord Injury Destination Policy - Christchurch
- Stroke Destination Policy – Dunedin

Other options....

- Medical Centre, GP Referrals
- Physio referral
- Hospital

Onward patient transports - Wanaka – Dunstan – Dunedin
PTS service Queenstown to Invercargill





St John

first to care

EVENTS

- ▶ Queenstown Marathon 21 staff
- ▶ Highlands 501 12 staff
- ▶ Rhythm and Alps 13 staff
- ▶ Motatapu - 16 staff
- ▶ Warbirds over Wanaka 21 staff



Motatapu 2015



St John

first to care





St John

first to care





New Zealand use: Eurocopter AS 350 Squirrel, Kawasaki BK 117



Big Boys Toys



St John

first to care





St John

first to care

Aero-Medical

- ▶ ANTS Helicopter Criteria
- ▶ ACCESS - High country Stations,
 - Back country users
 - Hiking tracks
- ▶ NUMBER RTC's
MCI's
- ▶ TIME “Clinically Significant” time savings,
such as, Surgical interventions,
Thrombolytic therapies
- ▶ SKILL Specific skills required, such as, pain
and airway management. Drug
therapys' (Crush Injury)



Motatapu – Mountain biker



St John

first to care





St John

first to care

Moke Lake – Vehicle rollover



Glenorchy – Horse riding accident



St John

first to care



Macetown – Hiking accident



St John

first to care



Glenorchy — Road access closed due to heavy snowfall



St John

first to care





St John

first to care



Some are not a simple pick up and go!!



St John

first to care



The LONG and SHORT of it





St John

first to care



Im Lost!!



St John

first to care





St John
first to care

Inter-Hospital transfers – with local flight nurses



Its not ALL about helicopters!!!



St John

first to care





St John

first to care



Another more popular tourist attraction



St John

first to care





St John

first to care



Ketamine.....our new best friend!



St John

first to care



In case you missed it.



St John

first to care





St John

first to care

Well....is it a flat white or a cappuccino?



Drive to Survive campaign



St John

first to care



A Gaggle of Water Fairy's



St John

first to care





St John

first to care



Another Gaggle



St John

first to care





St John

first to care

A Swarm of Ambos — Im sure there's a doughnut down here somewhere!





St John

first to care

A “Show Pony” of Ambulances



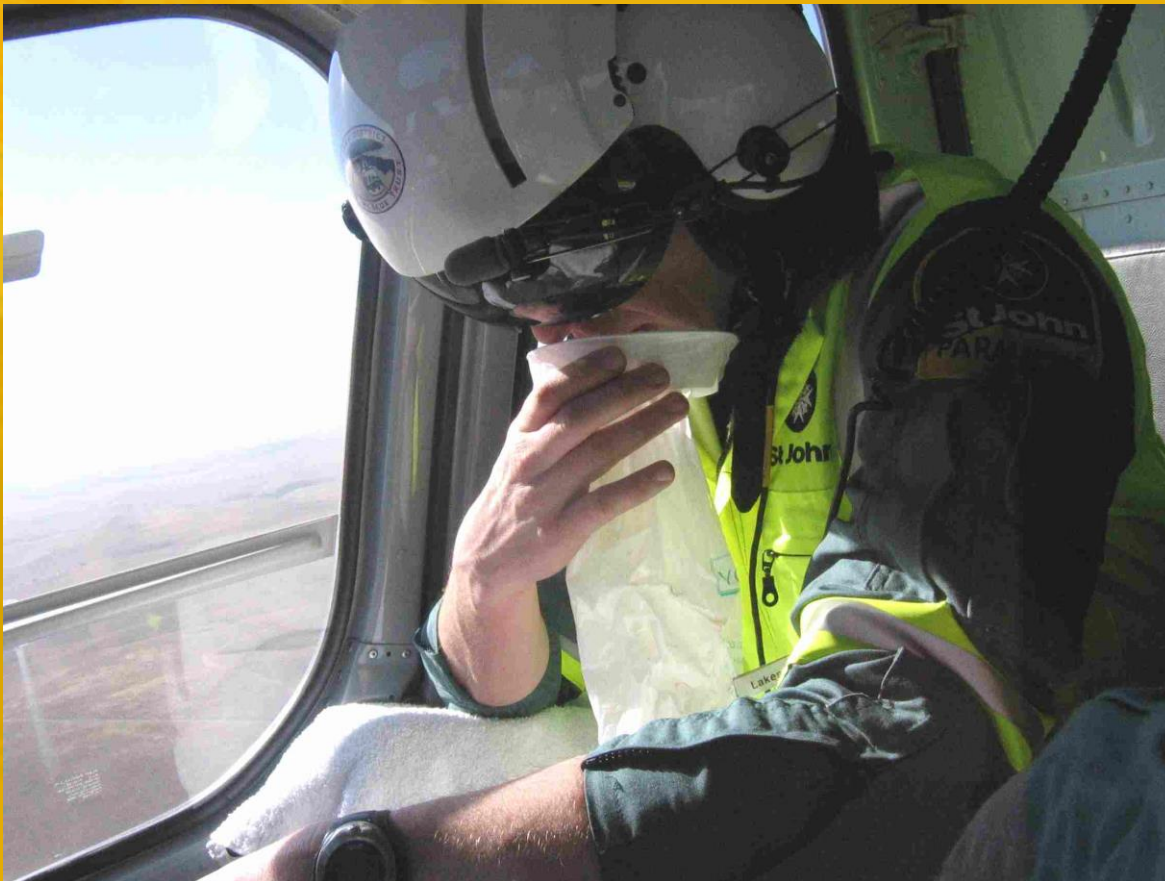


St John

first to care

Blood....but no Guts.....

- ▶ Viewer discretion advised....





St John

first to care





St John

first to care





St John

first to care



Mt Crighton



St John

first to care

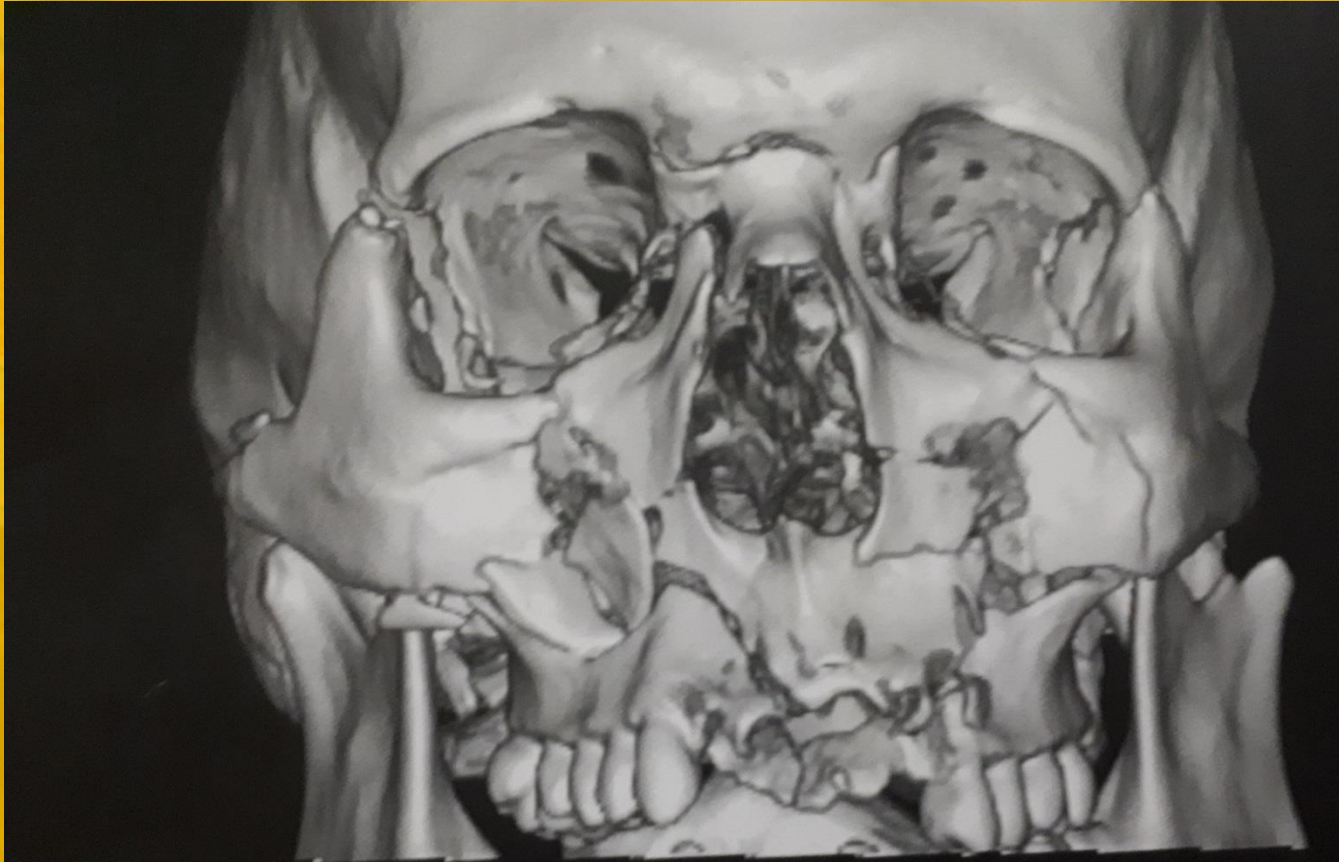


One of my worst / most memorable jobs???



St John

first to care



It snows here



St John

first to care





St John

first to care



It can be stressful!!!



St John

first to care



Its definitely not ALL bad.



St John

first to care



Some days just Rock.....Thank You.



St John

first to care

