

Plasma

BY ANITA TE KAHU

About me:

- Born in the Hawkes Bay
- Trained as a Enrolled Nurse in 1978
- Graduated in 1979 and worked in a rehabilitation unit
- Currently work as a District nurse in Wellington



Reminder to drink water!



Registration



Registration



Travel



Medication



Breast feeding

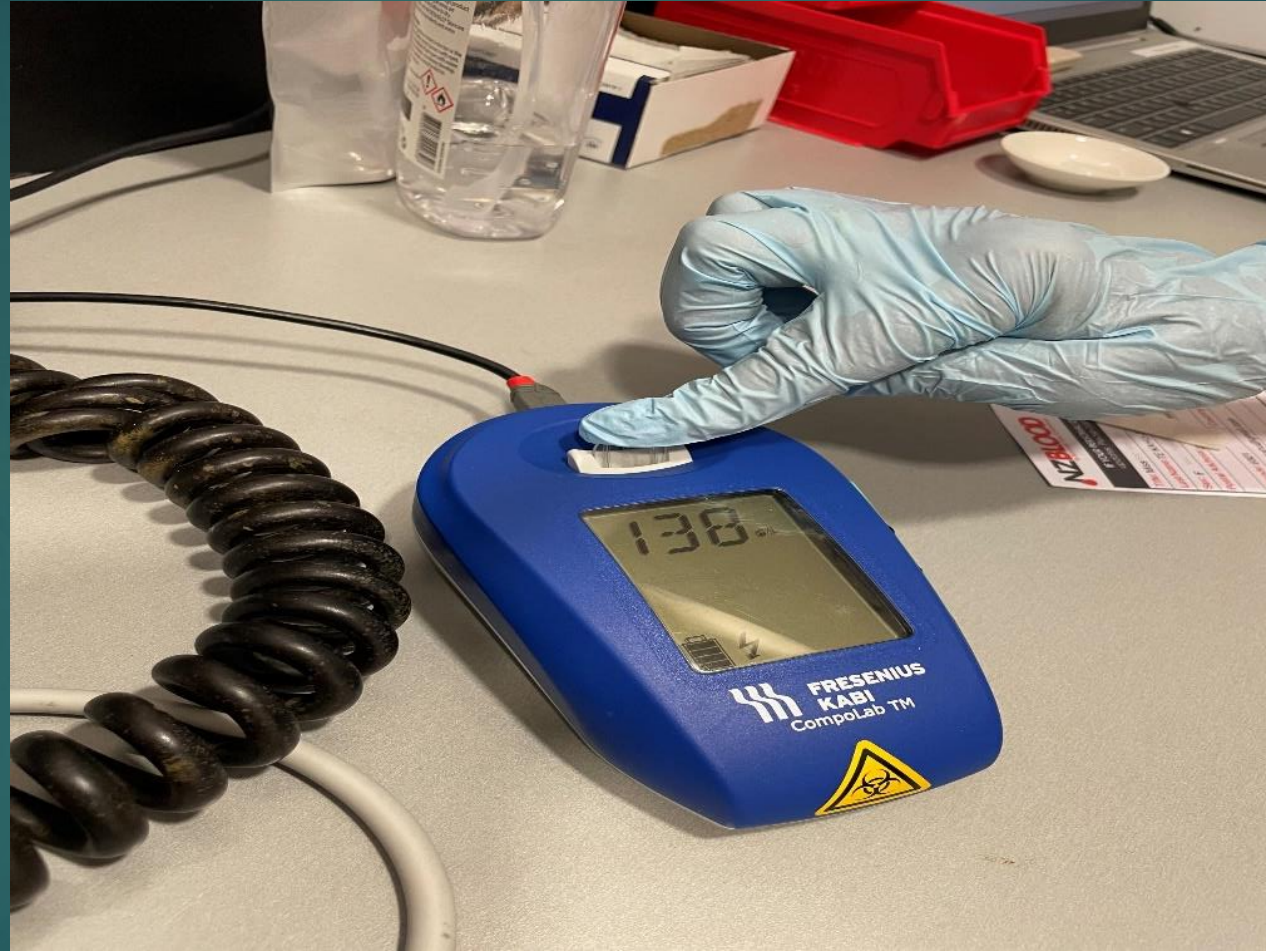


Sex



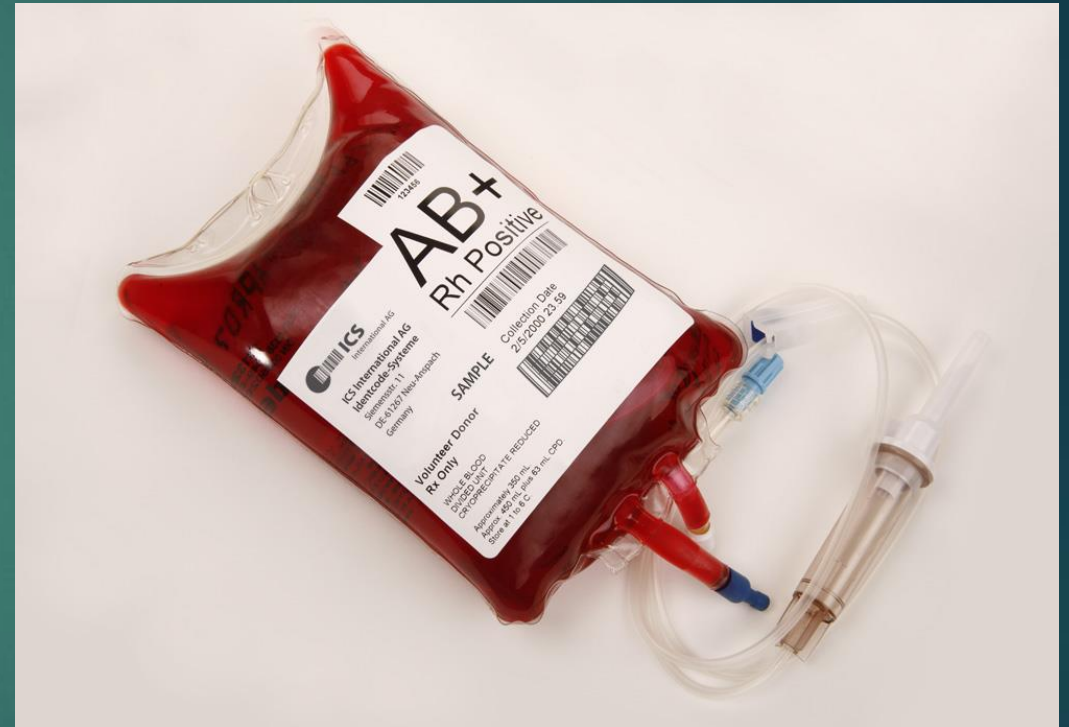
Honesty

Hands up!



Blood donation

- 4 – 6 litres of blood in the body
- Takes 4-8 weeks for the body to replace the red blood cells
- Red blood cells are needed for those with sickle cell anemia or can with significant blood loss.
- Red blood cells transfused within days
- Time taken 45mins to an hour.
- Shelf life of donated blood is 35 days.



Plasma donation:

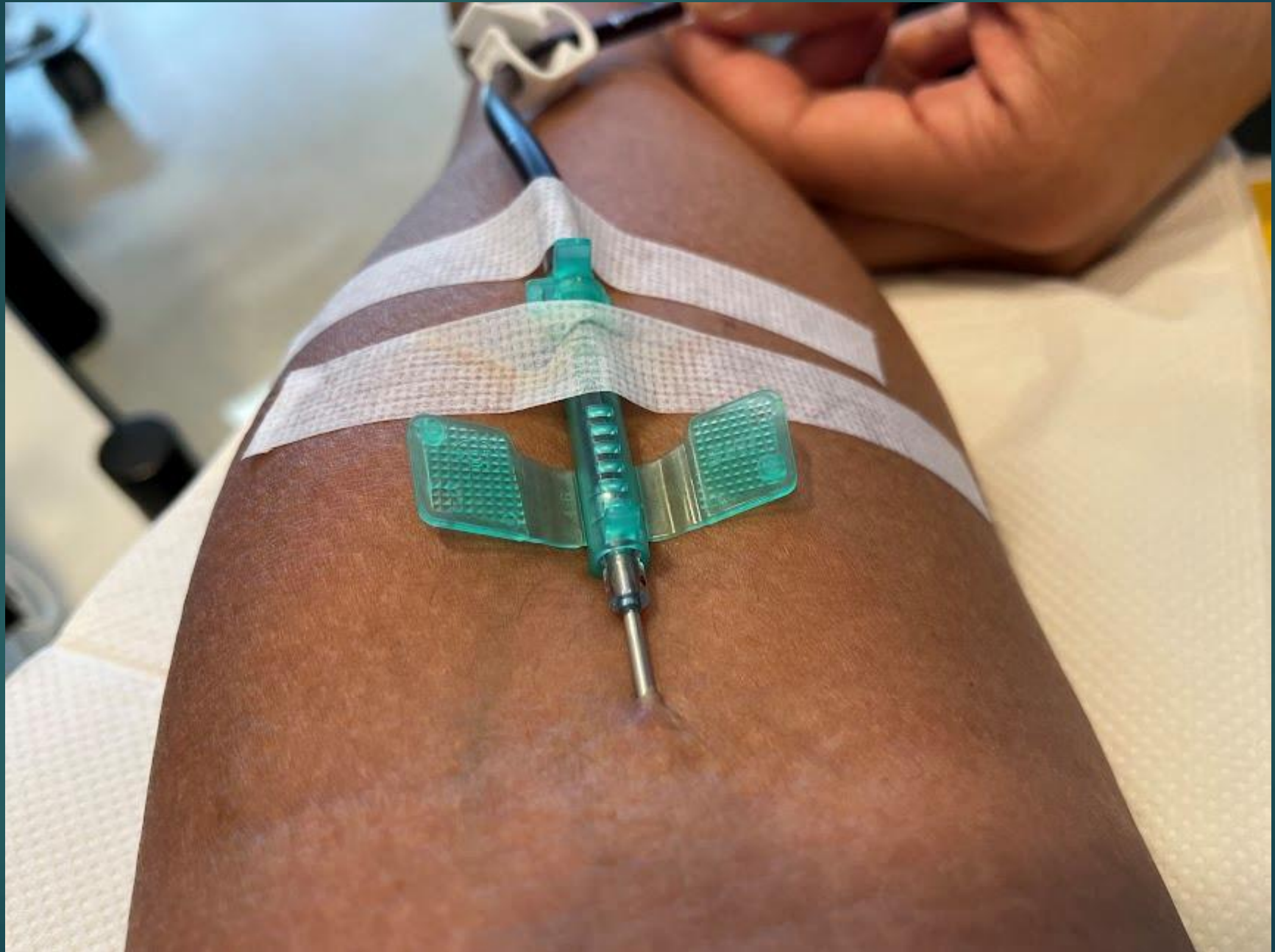
- Process of donation requires identification checks of the donator and consent gained.



Plasma machine

- Now replaced by Aurora
- Plasma is gold liquid carrying blood cells, water, proteins, and clotting factors
- Blood service needs 2600 plasma donations per week to meet demand.
- Plasma helps to treat cancer patients, trauma and burns victims, pregnant women and those with auto-immune diseases, blood-clotting issues and compromised immune systems.





My experience as a donor:

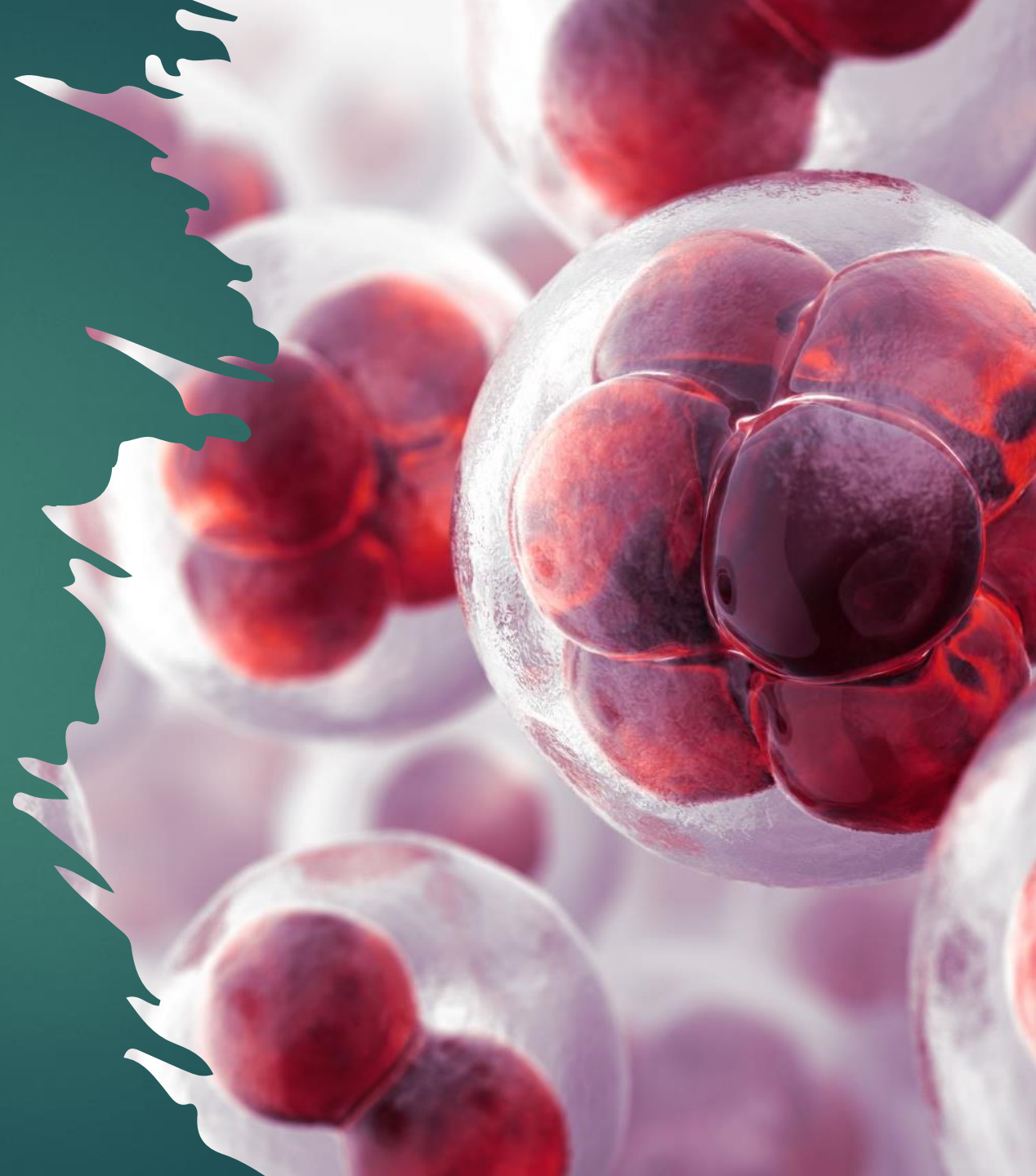
- I am directed to a Plasma machine.
- Checking again
- My time to relax for 40 minutes.



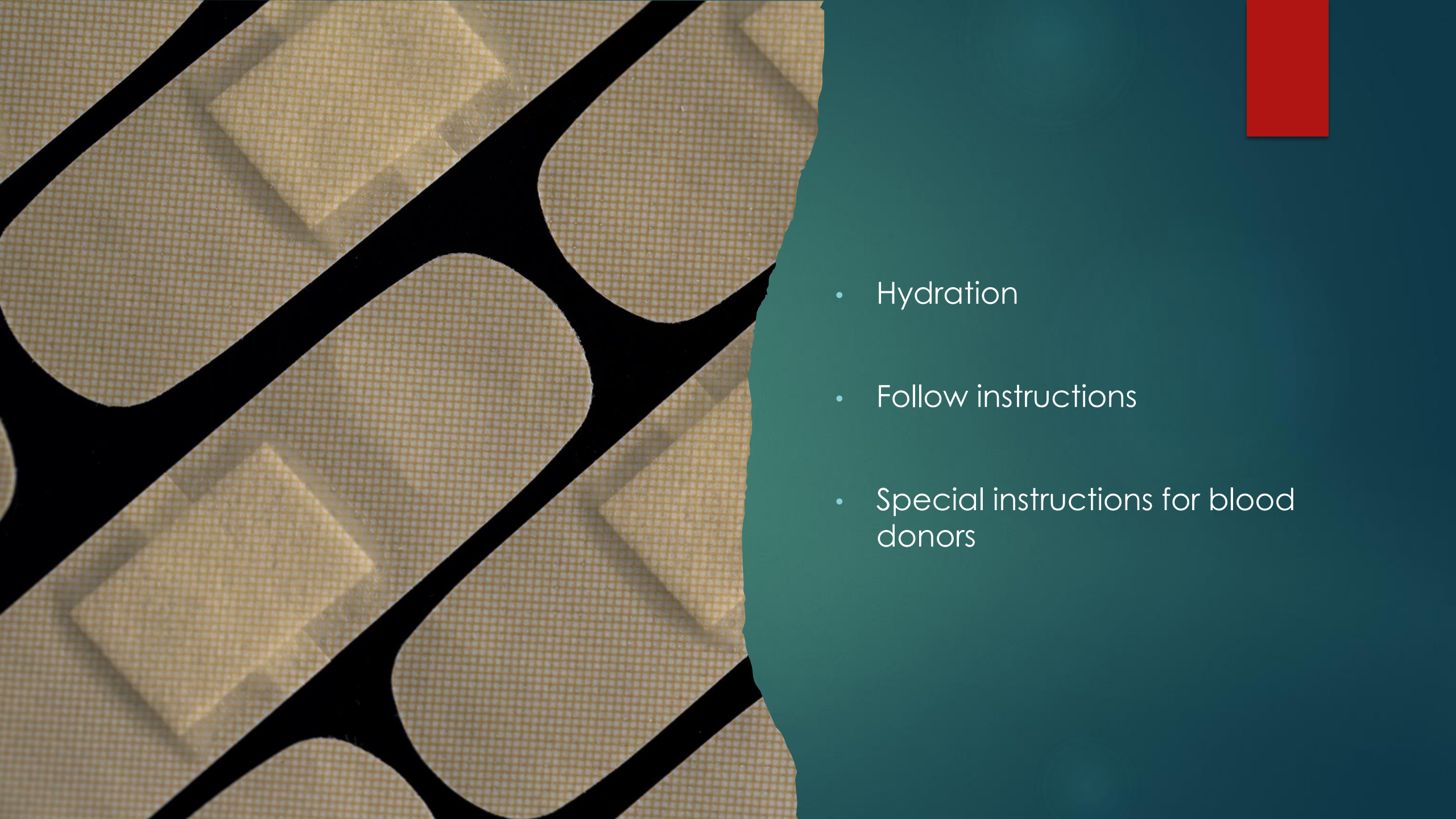
Blood groups

- Four major blood groups: A, B, AB and O.
- Donors who are blood group AB are special plasma donors because their plasma can be given to any of the other blood types.
- Then there are the RhD Groups:

Parents:	Children:
& +	+ or -
& -	+ or -
- & -	





- 
- Hydration
 - Follow instructions
 - Special instructions for blood donors

Double checking of blood products:

- ▶ In the hospital there is thorough checking process.
- ▶ EN to EN can double check products, if you are certified to follow the protocols & procedures its fine. So, you don't need an RN.
- ▶ If you feel unsure ask.



Conclusion



The New Zealand Blood service has The Transfusion Medicine Handbook which is designed to assist hospital staff and other health professionals in modern Transfusion Medicine Practice.



Currently every hospital has their own Protocols & guidelines to go by.



To administer the transfusion the nurse RN or EN would need to be certified with IV endorsement.



Thanks to New Zealand Blood Service for ongoing support.



Newtown NZBS center staff.



NZBlood APP (on my phone)



Permission to take pictures during my Donation

