

# NZNO 10<sup>TH</sup> NATIONAL GERONTOLOGY SECTION CONFERENCE

Rydges Latimer, Christchurch **31 Oct & 01 Nov 2016**

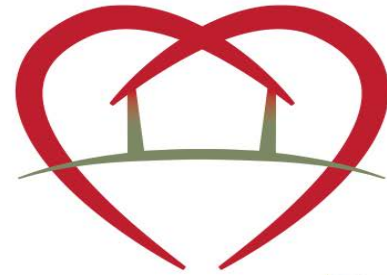


**BACK  
TO OUR  
FUTURE**



## **“Transforming Safe Care for Residents in Rotorua”**

***Kim Brooks***  
***Whare Aroha CARE***



# Whare Aroha CARE



Whare Aroha  
CARE

# NZNO GERONTOLOGY

## “BACK TO OUR FUTURE”

# WHARE AROHA CARE STORY

## A BRAVE JOURNEY TO A NEW MODEL OF CARE



# PEOPLE LIVING NORMAL LIVES

OUR NEW VILLAGE

## WE AIM TO:

Improve the quality of life for  
people living with dementia  
who need to live in care.

# WHARE AROHA CARE

Not for Profit Charitable Trust  
providing care.

- Rest home
- Safe care (secure)
- High (hospital) level care

Most of our residents have a significant  
level of dementia





# THE CREATORS



# THE TEAM



Proof Only © Craig Robertson

# TEAMWORK



# TEAMWORK



# WHARE AROHA CARE

Improve the quality of life for our residents who need to live in care

Institutional model of care

and we dared to IMAGINE

# THE CARE VILLAGE



Whare Aroha  
CARE's new  
village, on the  
shores of Lake  
Rotorua, is  
inspired by the  
de Hogeweyk  
village

**BASED ON A SOCIAL RELATIONAL  
MODEL OF CARE**

**THE ELDERLY LIVING NORMAL  
LIVES**

# GEMS ON OUR JOURNEY

- Articulate the vision – continuously
- Have courage.....
- There are bears out there 😊😊😊
- There have been some fabulous people along our journey
- Don't allow your vision to be diluted

# A JOURNEY OF DISCOVERY!

- Our lease expires December 2016
- Model – de Hogeweyk
- Architects – Ignite
- NZ Village – small town NZ

# A JOURNEY OF DISCOVERY!

- **NZ lifestyles**
- **Financial modelling**
- Staff modelling, skills and training
- MoH contracts & certification
- Technology



Whare Aroha  
CARE

**We are transforming  
CARE right here** →

To help our Community Trust,  
please visit

[www.givealittle.co.nz](http://www.givealittle.co.nz)

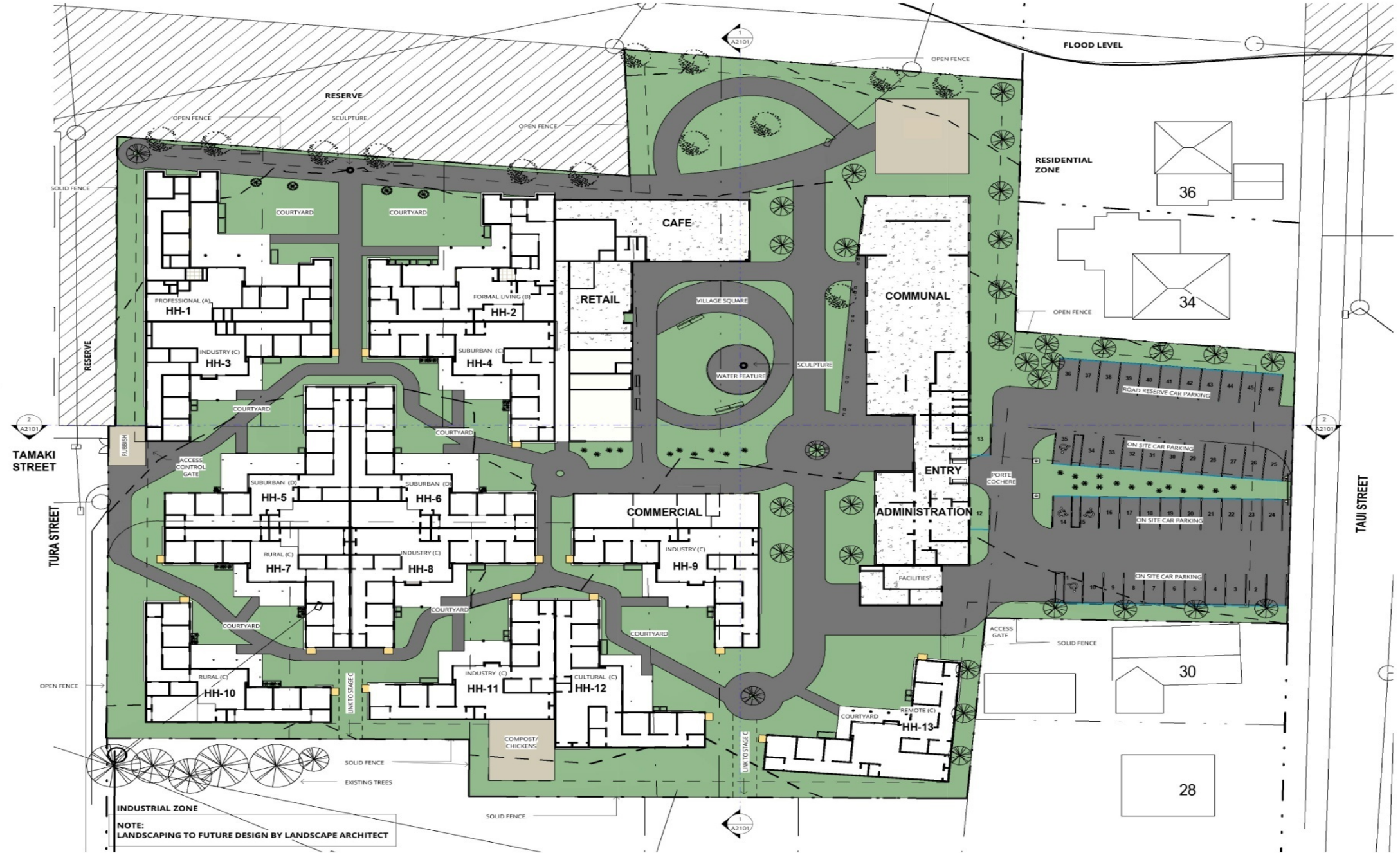
For more information contact  
Deanna Smit on 027 271 2884  
or Thérèse Jeffs 027 761 4460

OPENING DEC. 2016





11  
11A

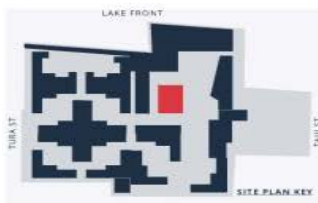


53

51  
CONSULTANTS

# SMALL TOWN NZ

- Town Square
- Cafeteria, sports bar and boardwalk
- Main Street, shops, hairdresser, club rooms, superette/dairy
- Town Hall – Administration
- Club rooms



## TOWN SQUARE

FLEXIBLE SPACE FOR MARKETS, LIVE MUSIC, BUSKING, PICNICS OR RELAXATION

ASPHALT PATHS. TREES AND GRASS AREAS. SOME SEASONAL PLANTING. LIMITED PAVING

SHELTER FROM SHADE SAILS, UMBRELLAS, CANOPIES, TREES AND POSSIBLE ROTUNDA



CENTRAL WATER FEATURE AND LOCAL SCULPTURE OR ROTUNDA

STREET FURNITURE

POSTBOX

BUS STOP

SIGNPOSTS AND LIGHT POSTS



CONTEXTUAL REFERENCE IMAGES











## ADMINISTRATION, ENTRY & COMMUNITY EDGE



CONTEXTUAL REFERENCE IMAGES



ACTIVE EDGE WITH SEATING PAVING AND CANOPY

LIBRARY/ART GALLERY/COMMUNITY CENTRE FEEL AT SMALL SCALE

CLOCK TOWER, BINS, INFORMATION SIGN, LIGHTING

LARGE TREES AND STRUCTURED LANDSCAPING



Whare Aroha Care  
Rotorua

SCALE  
N/A

Whare Aroha Care Dementia Village

PRELIMINARY DESIGN LOOK & FEEL  
1501-001  
03/08/2014  
REVISION A  
PAGE 1

**IGNITE**  
ARCHITECTS

Whare Aroha  
CARE

# LIFESTYLES

People will live in the household that  
best reflects the lifestyle they are  
most familiar with

# MIDDLE NZ

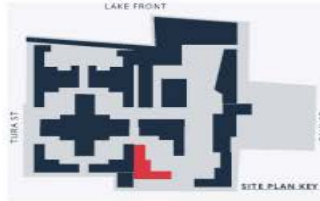
Probably the largest representation of the community.

- Generally owned their own home with a back-yard big enough to play cricket with the kids.
- Family tends to be the cornerstone of life where it is important to find a balance between traditional standards/values and change.
- Typically, there is a traditional allocation of roles
- There is community involvement with children's interests (sport & other extra-curricular activity).
- The traditional kiwi analogy of rugby/racing/beer epitomises this life-style.

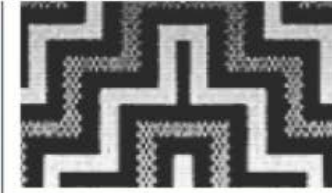
# CULTURAL

Identity comes from living within a Maori cultural village setting where the Marae is integral to the community way of life,

Use of Te Reo, home open, guardianship of natural environment, karakia important



## CULTURAL



CONTEXTUAL REFERENCE IMAGES



EXPOSED RAFTERS OR TRUSSES

CENTRE POLE

SKILLION CEILING

CONSIDER CARVING



CENTRAL ENTRY POINT,  
OPEN WIDE ENTRY  
SPACE

LOW PITCHED GABLE &  
FLUSH JOINTED RAKED  
SOFFIT

LONG WINDOWS

LARGE DEEP SOFFIT  
OVER ENTRY DECK

PERGOLAS FOR SHAD-  
ING

ROUGH SAWN TIMBER  
CLADDING

OPPORTUNITIES FOR  
PATTERNED WEAVE



TIMBER DECK AND PATH

TIMBER OUTDOOR FUR-  
NITURE

OUTDOOR SEATING AR-  
RANGED AROUND CEN-  
TRAL POINT(S)

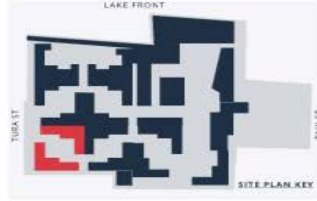
NATURAL LANDSCAPING  
WITH LOCAL FLORA

ROUGH SAWN TIMBER  
FENCE



# COUNTRY

People with a rural background,  
business people, wife works  
alongside husband, strong work  
ethic, outdoors, leave a legacy to  
family, practical, dining room table the  
hub of the home.



## RURAL



CONTEXTUAL REFERENCE IMAGES



PLASTERBOARD / VERTICAL SHIPLAP WALL LINING  
BATTEN JOINTED PLASTERBOARD CEILING  
TIMBER DOORS, WIDE ARCHITRAVES  
CARPET AND TIMBER  
RECESSED LIGHTS



EXPANSIVE OUTLOOK  
PITCHED GABLE ROOF & COVERED DECK  
ENTRY OFF VERANDAH  
RAKED SOFFIT WITH EXPRESSED RAFTERS  
HUNTLY BRICK CLADDING  
GRID PATTERN WINDOWS  
SLIDING VERANDAH DOORS



TIMBER DECK VERANDAH FULL LENGTH  
PAVERS TO PATHS, PALING FENCE  
MESSY GARDENS  
LANDSCAPING RUGGED AND ORGANICALLY ARRANGED

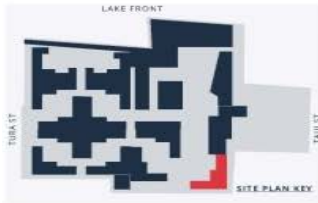


# MINIMALIST

People who have lived a simpler life, provision of food, shelter and clothing is primary objective, limited opportunities, not wasteful, likely to have government income assistance.

# REMOTE

Identify with living near the coast, bush or reclusive/secluded life-style, live off the environment, self sufficient, unorthodox, non conformist and austere.



## REMOTE



"NESTLED AND NATURAL"

PERGOLA SURROUNDING ENTRY

PITCHED TIN ROOF

BATTENED AND RAKED SOFFIT

BOARD & BATTEN AND HORIZONTAL STEEL CLADDING

OUTWARD OPENING VERANDAH DOORS

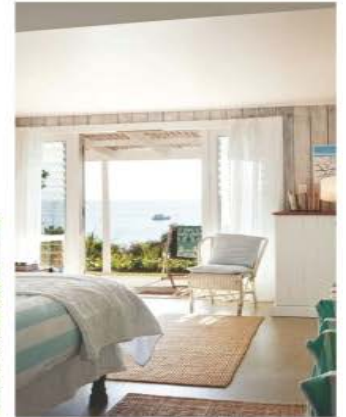


VERTICAL SHIPLAP WALL LINING

SKILLION CEILING

CARPET AND TIMBER

RECESSED LIGHTS



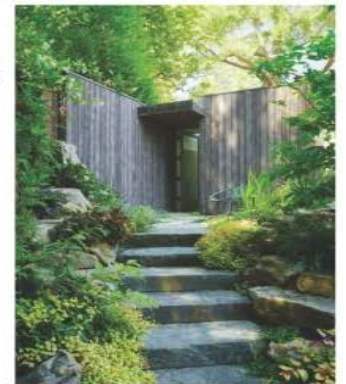
TIMBER DECK AND PATH

SHADE SAIL PINNED TO WALL

WILD GARDEN (NO GRASS)

LANDSCAPING TO ENSURE "ENCLOSED FEELING"

PUNGA FENCE



# CONTEMPORARY

Modern people who have experienced the comforts of life, socially & politically engaged, have a global view, accessed higher education, enjoy sports; status conscious, contemporary art, music & culture, enjoy privileges of success.

# CLASSIC

People with a more well-to-do lifestyle,  
value etiquette, politically aware  
internationally and nationally, family  
money, entertaining, retire to the lounge  
for formal conversation, traditional values,  
access higher education.

# EACH HOUSE:

Will be decorated and furnished in a way that is familiar, the house rhythms and food will all reflect the respective lifestyle, giving people the opportunity to contribute to, and be surrounded by familiar sounds and smells.

PEOPLE WILL BE HAPPIER AND  
FEEL SAFER.

# PIONEERING DEMENTIA CARE IN NZ

