



Human Milk

for
Our Babies

Milk Banking – Protecting the Baby and the Mother

HAZEL MCGREGOR

CNS NEONATAL INFANT FEEDING

RN RM IBCLC

Overview

- Global Human milk banking
- The role of Human milk banking in protects ,promotes and supports breastfeeding
- The process from donor to recipient in the NICU at Christchurch Women's Hospital
- Future Direction of Human Milk Banking

Protection

- Child infections
- Malocclusion
- Increased intelligence

- And Probably a reduction in
Overweight and Diabetes



Vulnerable babies



Human Milk
for
Our Babies

THE HUMAN MILK BANK

*Do you have surplus breast milk
you would like to gift?*

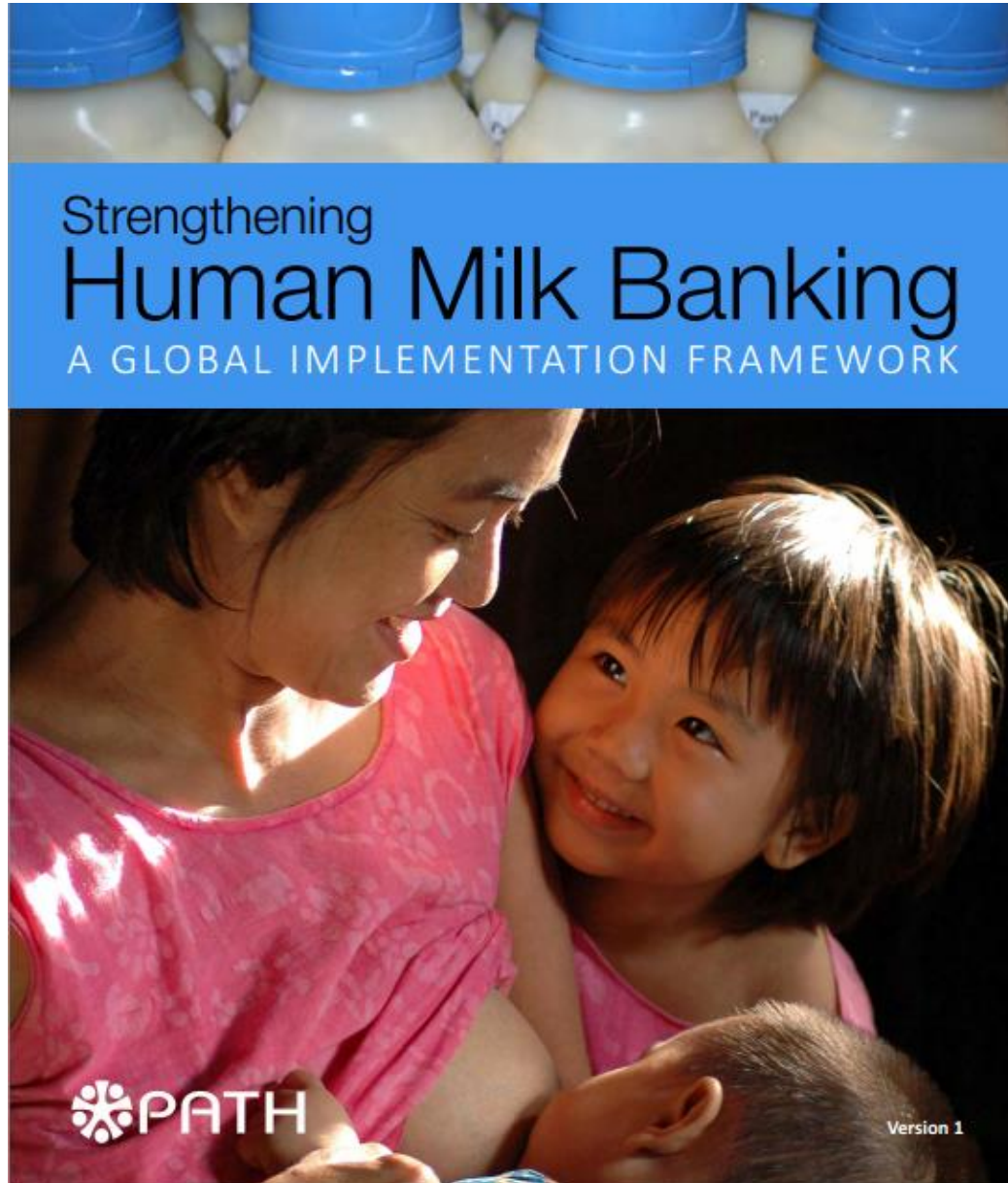
Human milk makes a significant
difference in the health and
outcome of sick babies

*"It was such a relief to have donor
breast milk for my baby until my
own milk was enough"*

Globally there are approximately 530 human milk banks in 40+ countries



From the International Milk Banking Initiative
website www.internationalmilkbanking.org



Download free pdf
copy of HMB Global
Implementation
Framework at
PATH's Website:

Strengthening Human Milk
Banking. A Global
Implementation
Framework. PATH
(www.path.org)

Mother-Baby Friendly Initiative: Integrating human milk banks

WHO ranking of feeding options for newborns



Figure 1: Donor human milk is the second choice, directly after mother's own breast milk, for feeding newborns.

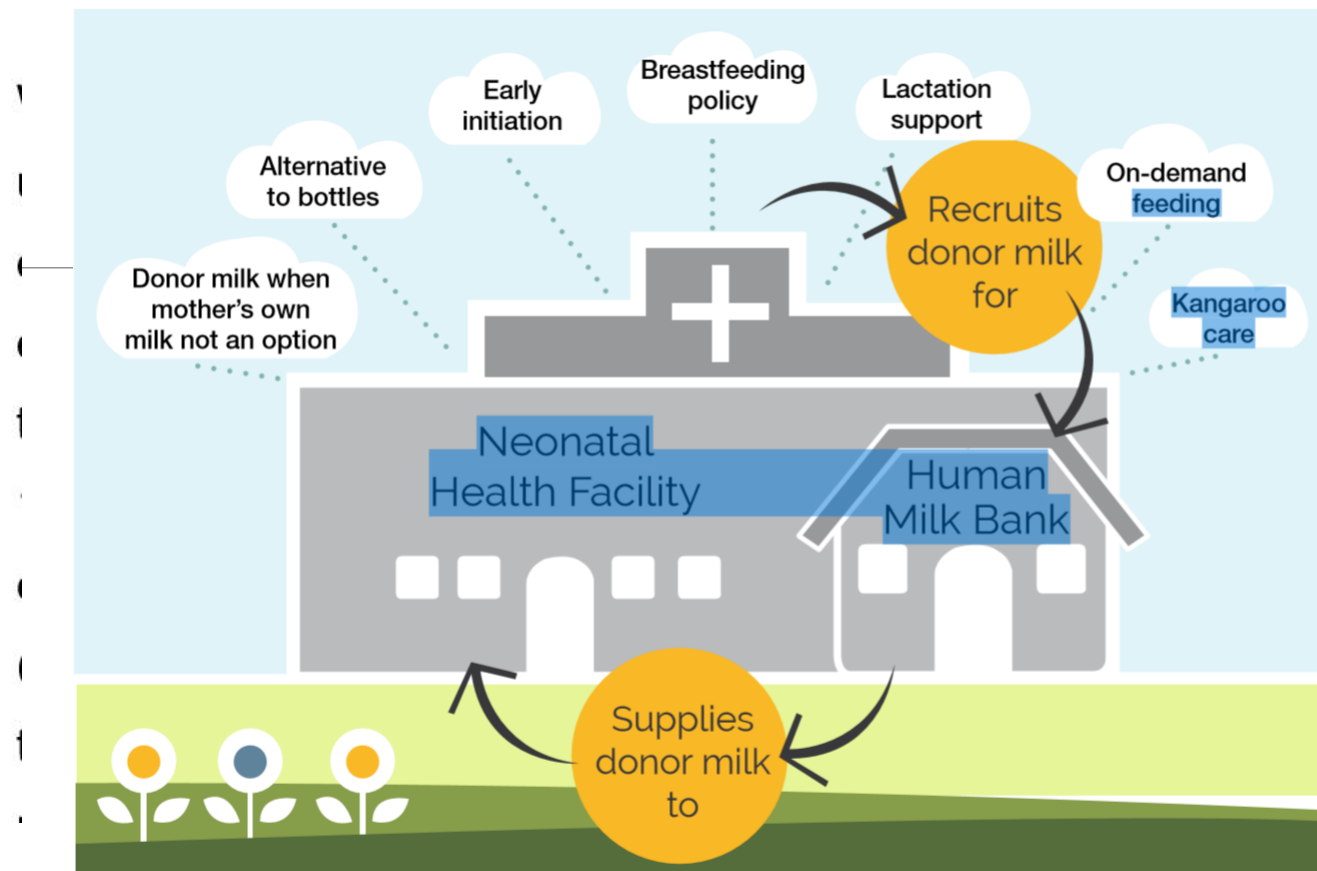
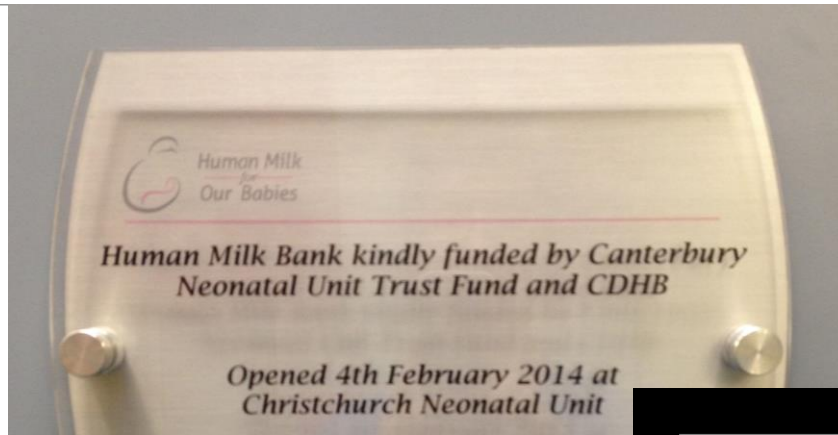


Figure 4: Human milk banks play an integral role in supporting and protecting breastfeeding by providing safe donor human milk.

Opened 4th February 2014





Milk sharing in NZ

- Hm4hbnz (Human milk for human babies NZ)
- Piripoho Aotearoa (formerly eats on feets NZ)
- Mothers Milk NZ

Not enough donors for New Zealand's only official human milk bank

GEORGINA CAMPBELL

Last updated 14:50, June 12 2016



IAIN MCGREGOR/FAIRFAX NZ

Search

- Home
- Your Health
- Hospitals & Services
- Patients & Visitors
- News
- What We Do
- About Us

Home → Hospitals & Services → Specialist Care & Treatment → Neonatal Service → Human Donor Milk Bank



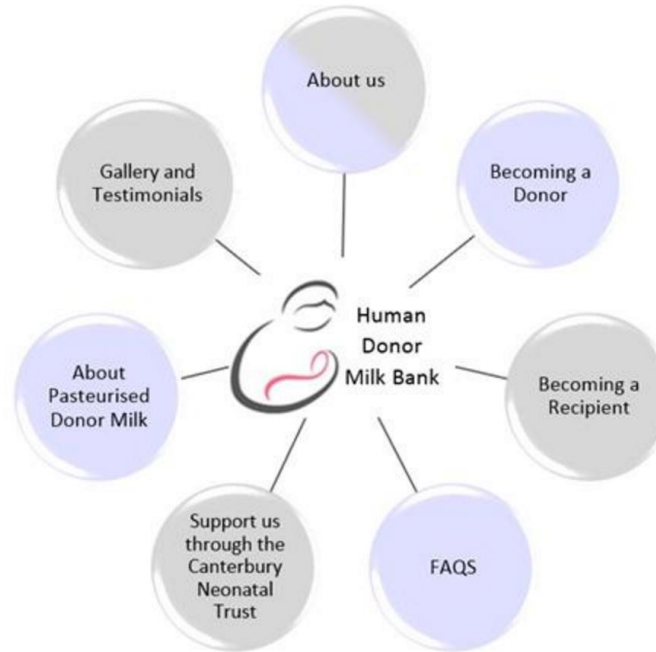
Hospitals & Services

- After Hours & Emergency
- All Hospitals
- Cancer & Haematology Services
- Child Health
- Christchurch Hospital
- Christchurch Women's Hospital
- Community & Rural Health Services
- Information for Health Professionals
- Māori & Pacific Health
- Maternity
- Mental Health
- Older Persons Health
- Specialist Care & Treatment
 - > Anaesthesia
 - > Brain Injury Rehabilitation
 - > Cardiology

Human Donor Milk Bank

Welcome to the Neonatal Human Donor Milk Bank website

You can get in touch with us by email at milkbankNICU@cdhb.health.nz



PREEMIES NEED YOU



Philosophy of Human Milk Bank 'Walking the Talk'

Supporting mothers while they establish
their milk supply

Reducing exposure to formula

Reducing risk of specific neonatal
complications

Issue date: February 2010

**Donor breast milk banks:
the operation of donor milk
bank services**

Executive Committee

Maggie Meeks

Consultant/Project Sponsor

Anthea Franks

NICU, Nurse Lead

Helen Little

CWH Senior Dietitian

Bernard Hutchinson

ACNM (B/Feeding portfolio)

Kathy Simmons

Maori Health Worker

Hazel McGregor

Infant Feeding Specialist

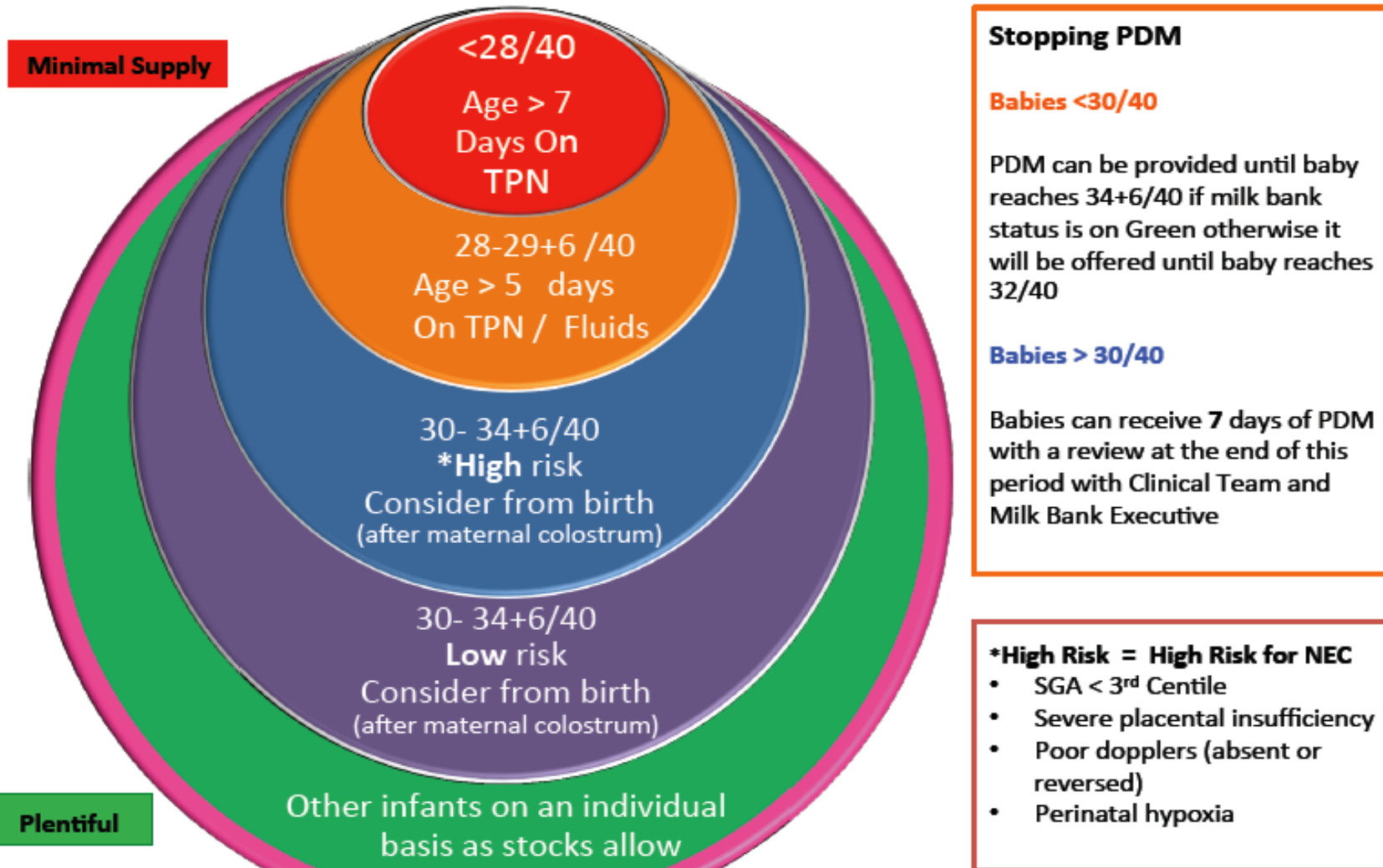
Graeme Webb

Quality and Safety



Allocation of PDM

Neonatal Unit Milk Bank Status: Recipient Babies Prioritisation tool





Screening Donors

_____ How do you know they are telling the truth.?







Pasteurised

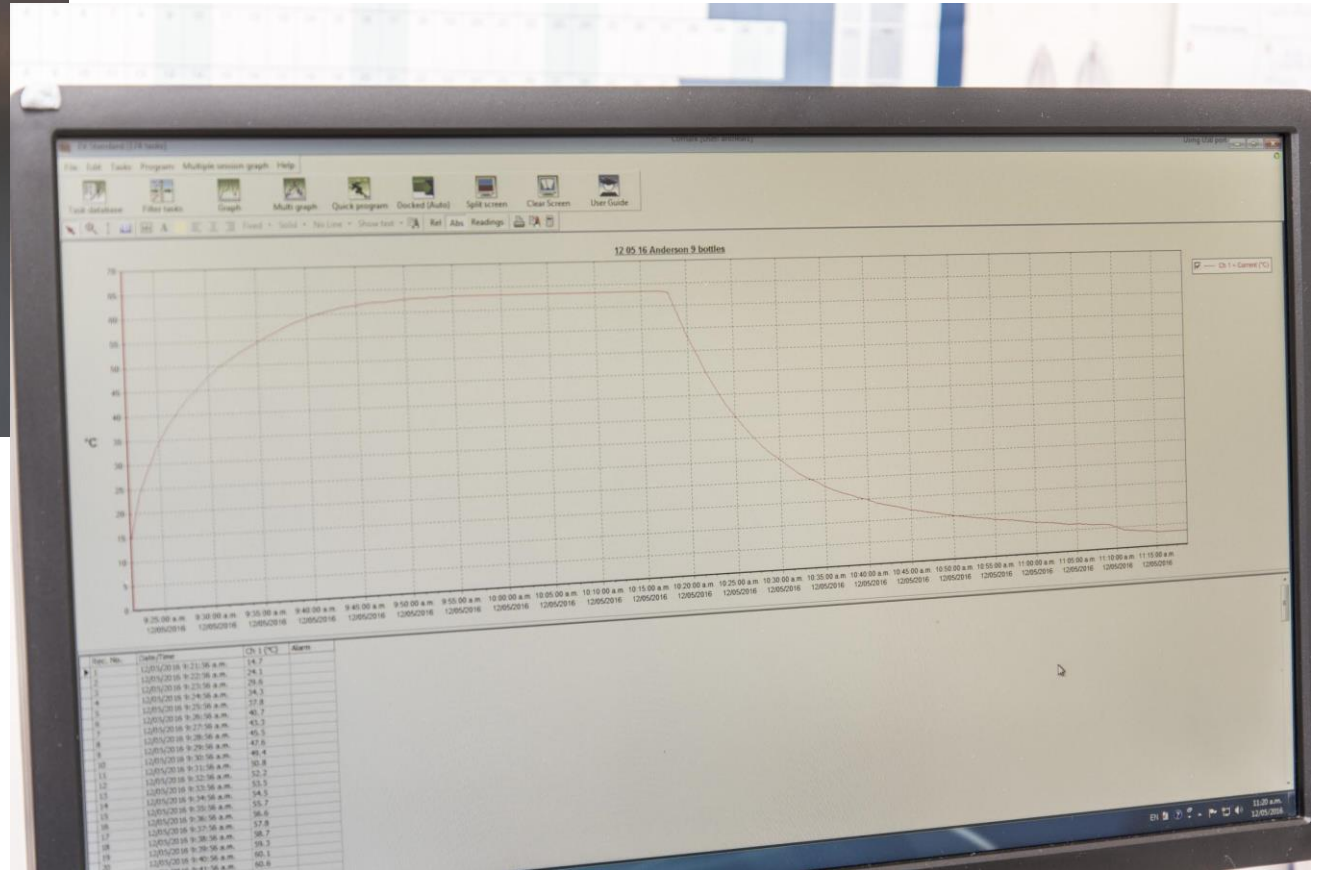
Defrosted in fridge

Pooled

Pre micro testing

Holder Method Pasteurisation





Effects of pasteurisation

Holder Method – 62.5c for 30 mins

- Inactivates HIV, CMV, HLTV and most other viruses

What is still preserved?

- 70% of sIgA and IgG
- 40% of Lactoferrin
- 75% of Lysosyme
- Oligosaccharides are totally preserved
- Long chain fatty acids are totally preserved



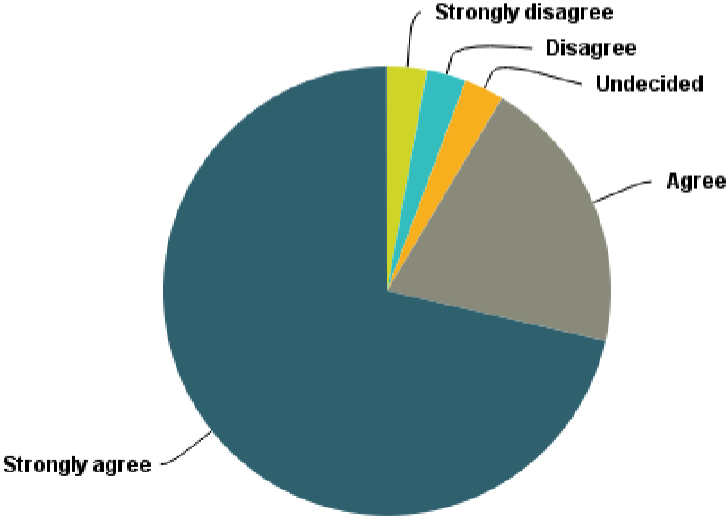
Tracking and Tracing



Figure 7

I would feel comfortable to use pasteurised donor milk for my baby if required and I had given consent

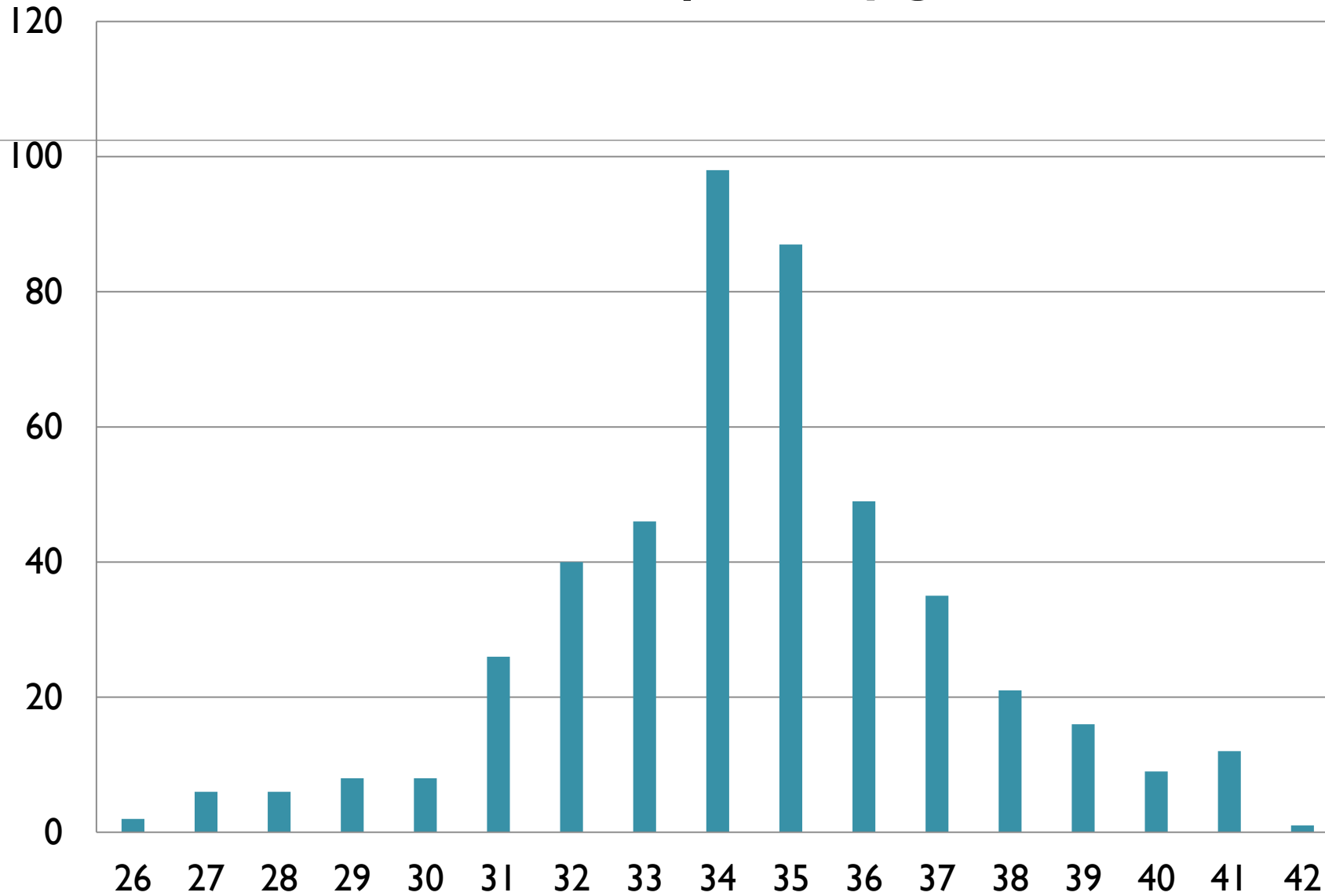
Answered: 35 Skipped: 0



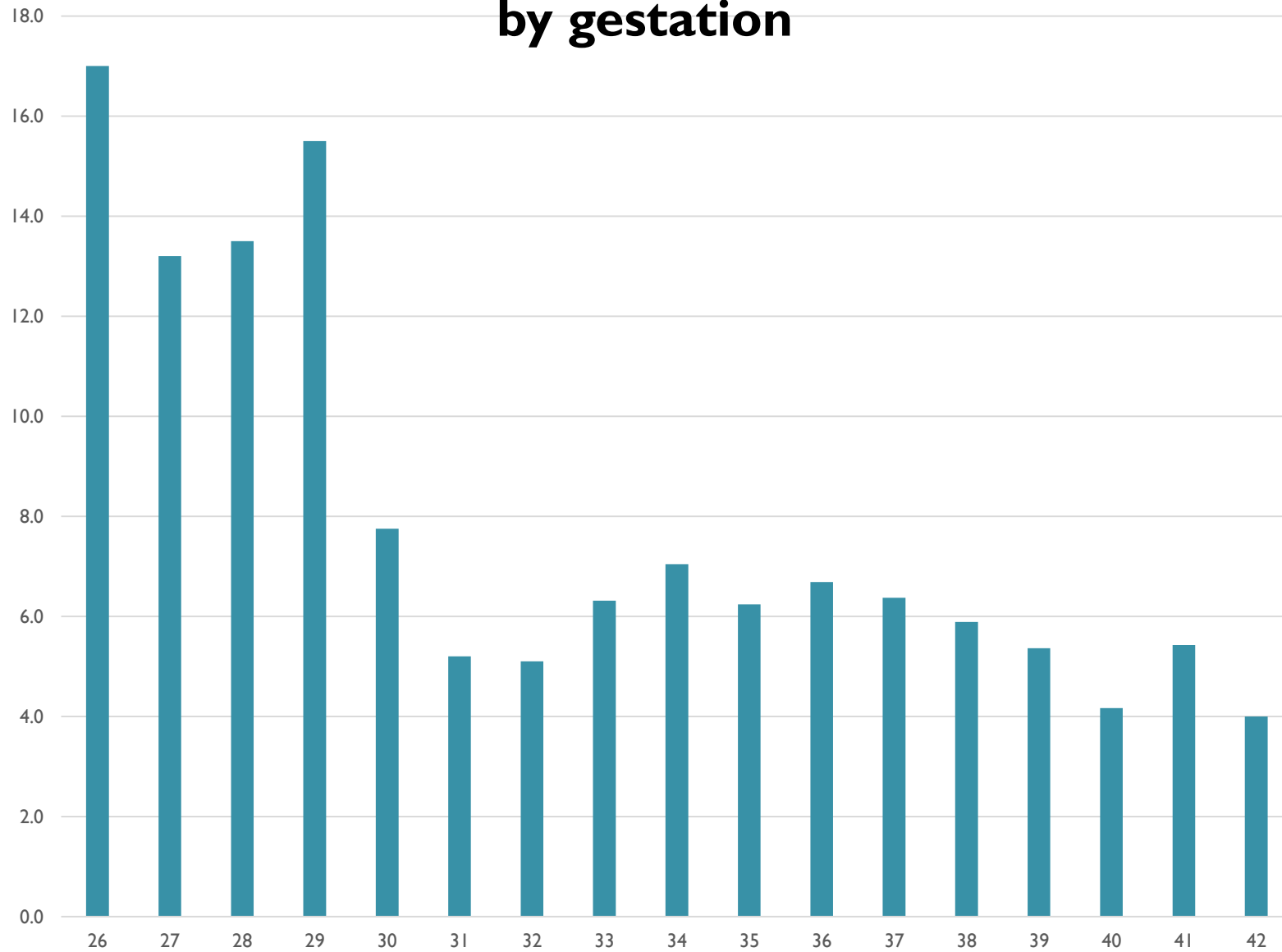
Donor Data to June 2016

NICU	105
NICU and after discharge	8
Community	29
TOTAL	142
Least amount donated	0 litres
Most amount of milk donated	46.433 litres
Most amount of babies fed by one donor	38 (25+5/40 baby)
Number of return donors	2
Screened but did not donate	18
Unacceptable lifestyle questionnaire	32

Number of recipients by gestation



Average number of days PDM was given by gestation



Future Projects

Milk Management System



Future Projects

Bereavement Donation Policy and Document



Human Milk Bank
Neonatal Intensive Care Unit
Christchurch Women's Hospital
Christchurch

Open every Tuesday 8am - 4.30pm
Phone 03 3644 344

Leave a message on the answering machine and we will get back to you

Website: Google: CDHB Human Milk Bank

Information about donating and forms are available on the website.

The Human Milk Bank takes donated breast milk, pasteurises it and gives it to babies in the Neonatal Unit whose mothers are unable to provide breast milk for their sick or premature baby.

Pasteurised means heating to remove harmful bacteria and viruses that occur in the breast milk. This is done because neonatal babies are vulnerable and have little immunity to fight infections.



Future Projects

Milk Composition analyser business case



\$50,000 Approx

Acknowledgements

Milk Bank Executive

Canterbury Neonatal Unit Trust

Donor and Recipient families

Cookie

All NICU Staff ,CWH



Human Milk
for
Our Babies



Questions?



References

.Arslanoglu S, Moro GE, Bellu, R, et al.

Presence of human milk bank is associated with elevated rate of exclusive breastfeeding in VLBW infants. *Journal of Perinatal Medicine*. 2013;41(2):129–131.

British Association of Perinatal Medicine, The Use Of Donor Human Expressed Breast Milk In Newborn Infants , A Framework For Practice.2016

AccessedFromwww25.10.16<http://www.bapm.org/publications/DEBM%20framework%20July%202016.pdf>

References

Escuder-Vieco, D., Garcia-Algar, Ó., Pichini, S., Pacifici, R., García-Lara, N. R., & Pallás-Alonso, C. R. (2014). Validation of a screening questionnaire for a human milk bank to determine the presence of illegal drugs, nicotine, and caffeine. *The Journal of pediatrics*, *164*(4), 811-814.

Escuder-Vieco, D., Garcia-Algar, Ó., Joya, X., Marchei, E., Pichini, S., Pacifici, R., & Pallás-Alonso, C. R. (2016). Breast Milk and Hair Testing to Detect Illegal Drugs, Nicotine, and Caffeine in Donors to a Human Milk Bank. *Journal of Human Lactation*, 0890334416648110.

Williams, T., Nair, H., Simpson, J., & Embleton, N. (2016). Use of Donor Human Milk and Maternal Breastfeeding Rates A Systematic Review. *Journal of Human Lactation*, *32*(2), 212-220