



NZNO Membership Committee



TŌPŪTANGA
TAPUHI
KAITIAKI O AOTEAROA

www.nzno.org.nz



We are the Members'
voice



NEW ZEALAND
NURSES
ORGANISATION

TŌPŪTANGA
TAPUHI
KAITIAKI O AOTEAROA

www.nzno.org.nz




INTRODUCTION

The Membership Committee is accountable to NZNO members and its general purpose is to bring a membership perspective to the Board.

The Membership Committee is a standing committee of NZNO.



TŌPŪTANGA
TAPUHI
KAITIAKI O AOTEAROA




The Membership Committee is elected in accordance with schedule five of the Constitution and consists of

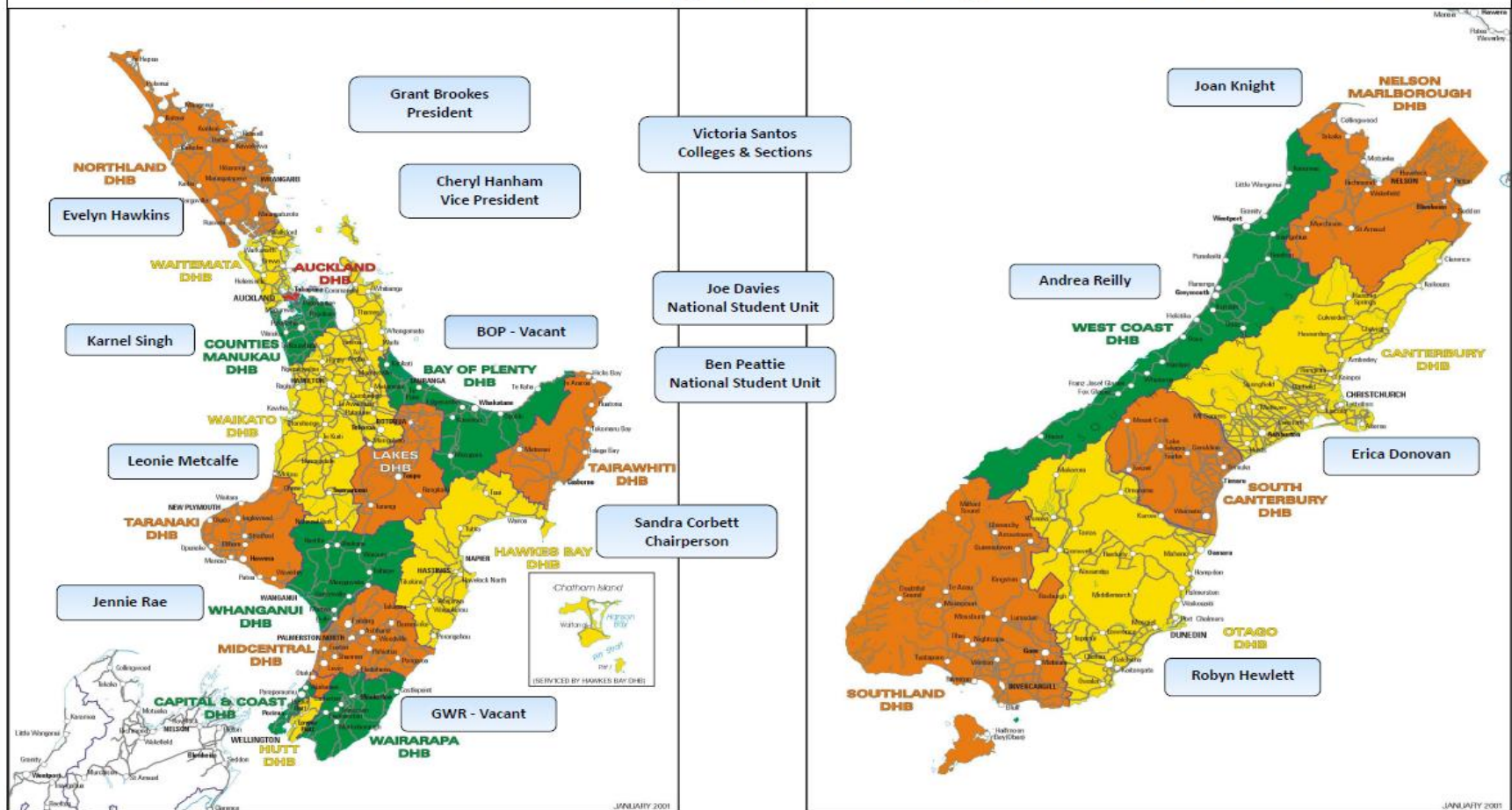
- 1 representative of each regional Council (11)
- 2 representatives elected by the National Student Unit
- 2 representative members elected by Colleges and Sections
- The President and Vice President are also members but shall not chair the Committee or be entitled to vote




TŌPŪTANGA
TAPUHI
KAITIAKI O AOTEAROA

- 
- The term of office of the Regional Council, National Student Unit and Colleges and Section representatives is three years, with a right of re-election for a further consecutive three-year term, and may be eligible to stand for office again after a break of three years
 - The Committee elects from amongst its members a Chairperson and vice-chairperson

New Zealand Nurses Organisation Regional Boundaries





Membership Committee has a description of roles and responsibilities which was developed in 2015 to help the understanding of the role of committee members which outlines the:

- Functions of the Committee
- Person specification
- Specific Tasks of Committee members

.... and is subject to annual review



Membership Committee

Meets Face to Face twice to three times a year
Teleconferences regularly in between

Membership Committee has the following:

- Business and Operational Plan
- Completes and reviews a work plan at each meeting
- Completes and reviews an action plan
- Each year in March each committee member completes a self-appraisal form



TŌPŪTANGA
TAPUHI
KAITIAKI O AOTEAROA

Florence Nightingale Memorial Fund

Applications

Close each year on the 31st March

The applications are reviewed by the
Membership Committee

& Te Poari

Three members from each standing committee

- Membership Committee
 - Te Poari



TŌPŪTANGA
TAPUHI
KAITIAKI O AOTEAROA




Projects that Membership Committee currently undertaking

1. Criteria for NZNO Honorary Membership

All the projects that the Membership Committee undertakes must be signed off by the NZNO Board of Directors.



TŌPŪTANGA
TAPUHI
KAITIAKI O AOTEAROA



One Person One vote
the Membership Committee encourages all NZNO
members to vote in the following:

1) The NZNO Remits – open 14th March 2019
Close 10th May 2019

Successful Remits announced at NZNO AGM
18th September 2019

2) Elections for NZNO Board of Directors -
nominations are yet to be called for



TŌPŪTANGA
TAPUHI
KAITIAKI O AOTEAROA