

# THE POETRY OF PESSARIES



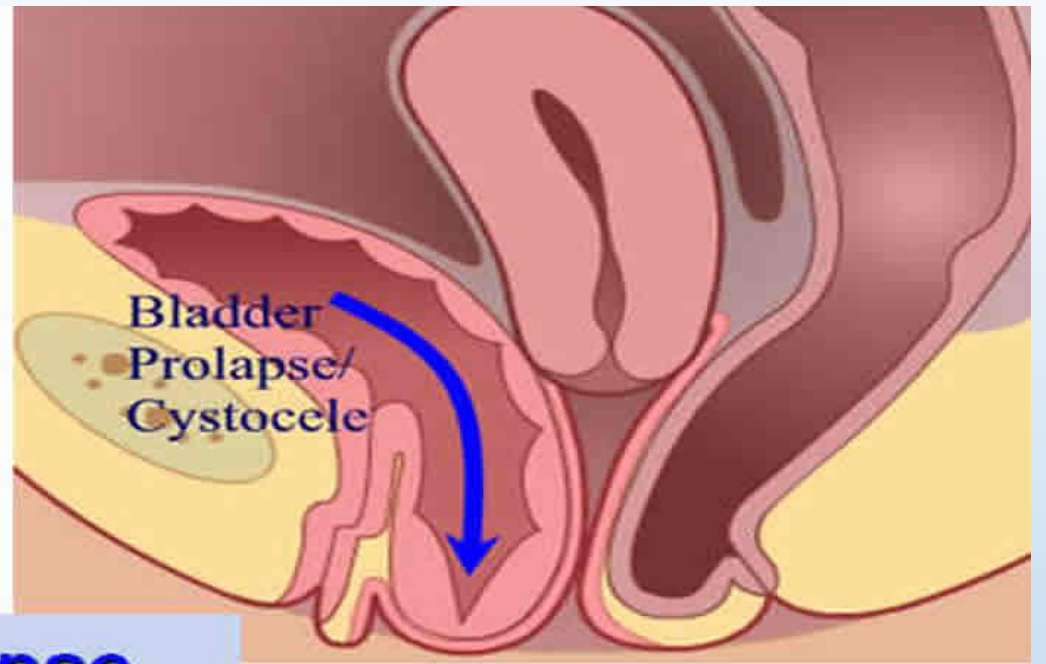
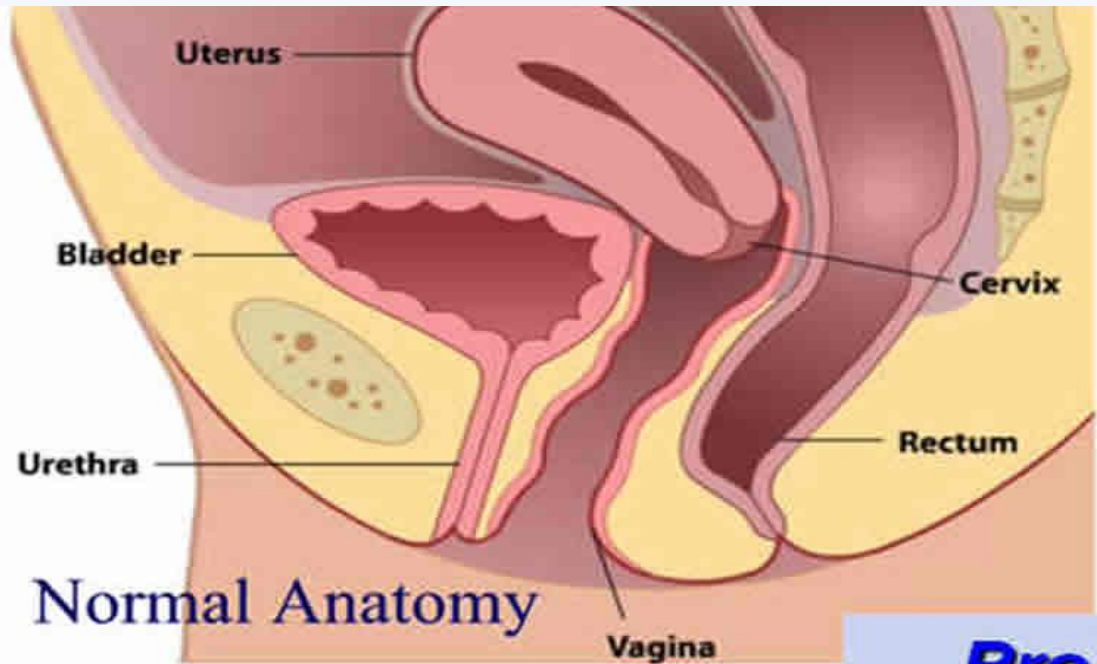
Helen Kemp 2021

# PELVIC ORGAN PROLAPSE

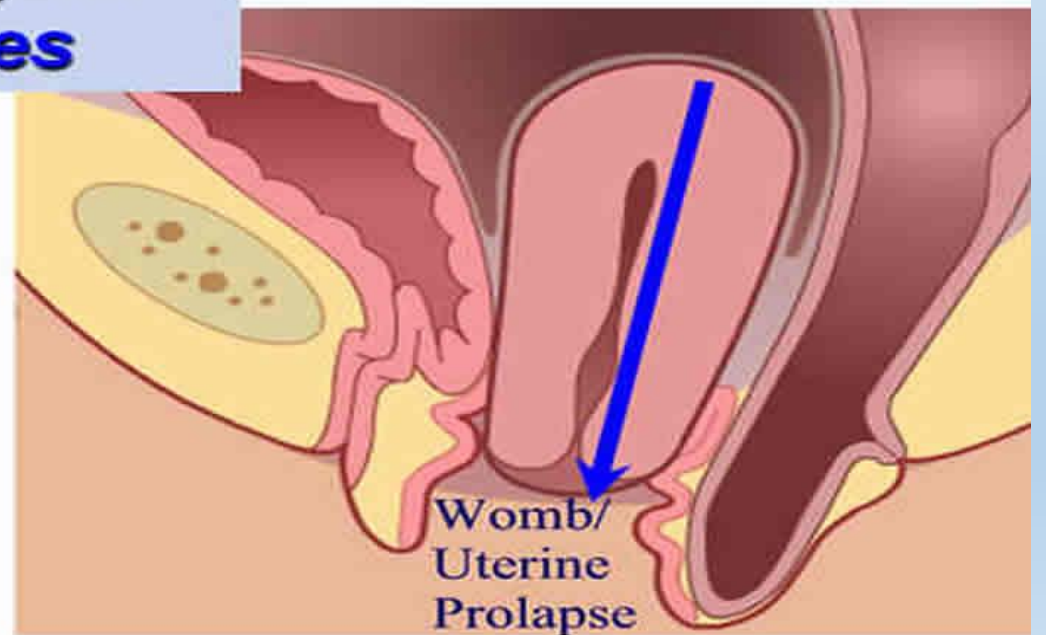
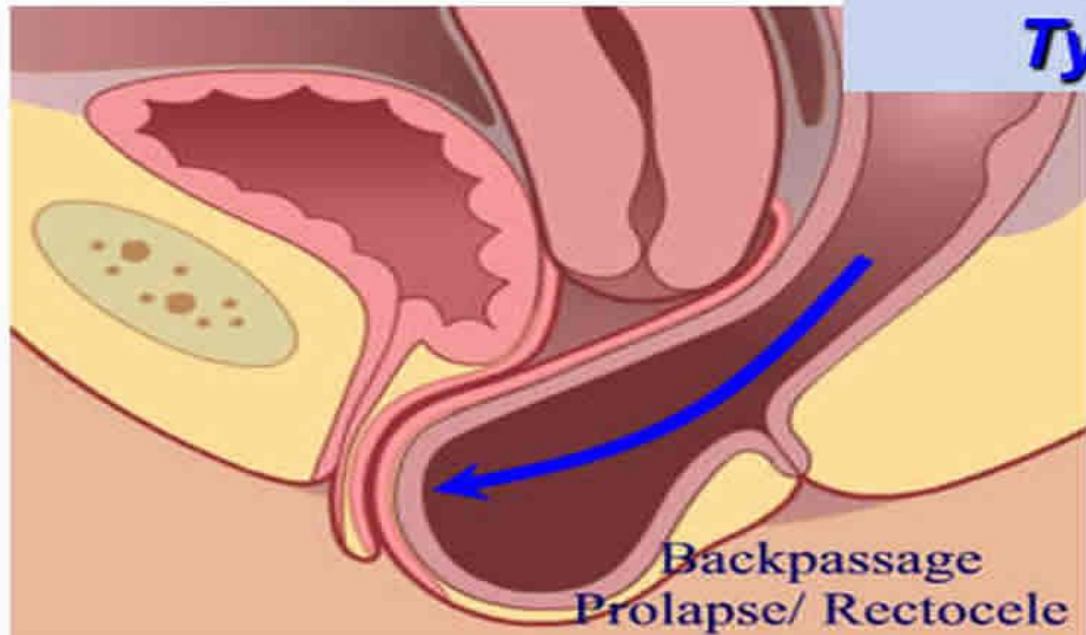


# RISK FACTORS FOR POP

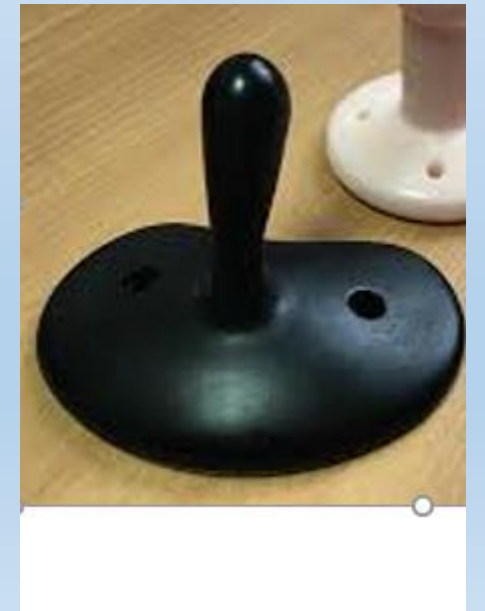
- PARITY
- AGE
- WEIGHT
- ETHNICITY
- CONGENITAL ABNORMALITIES
- HYPERMOBILE JOINTS
- GYNAECOLOGICAL SURGERY



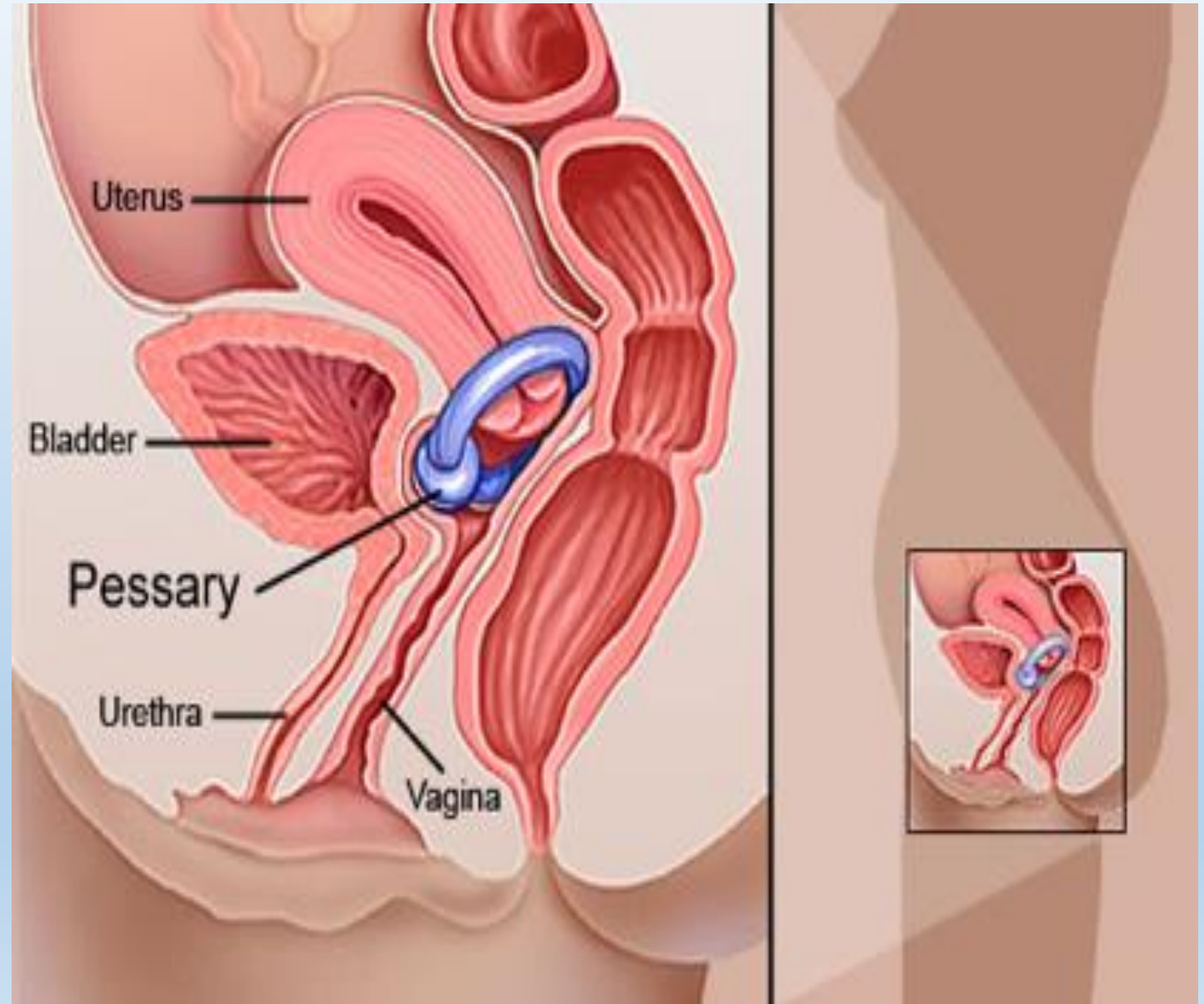
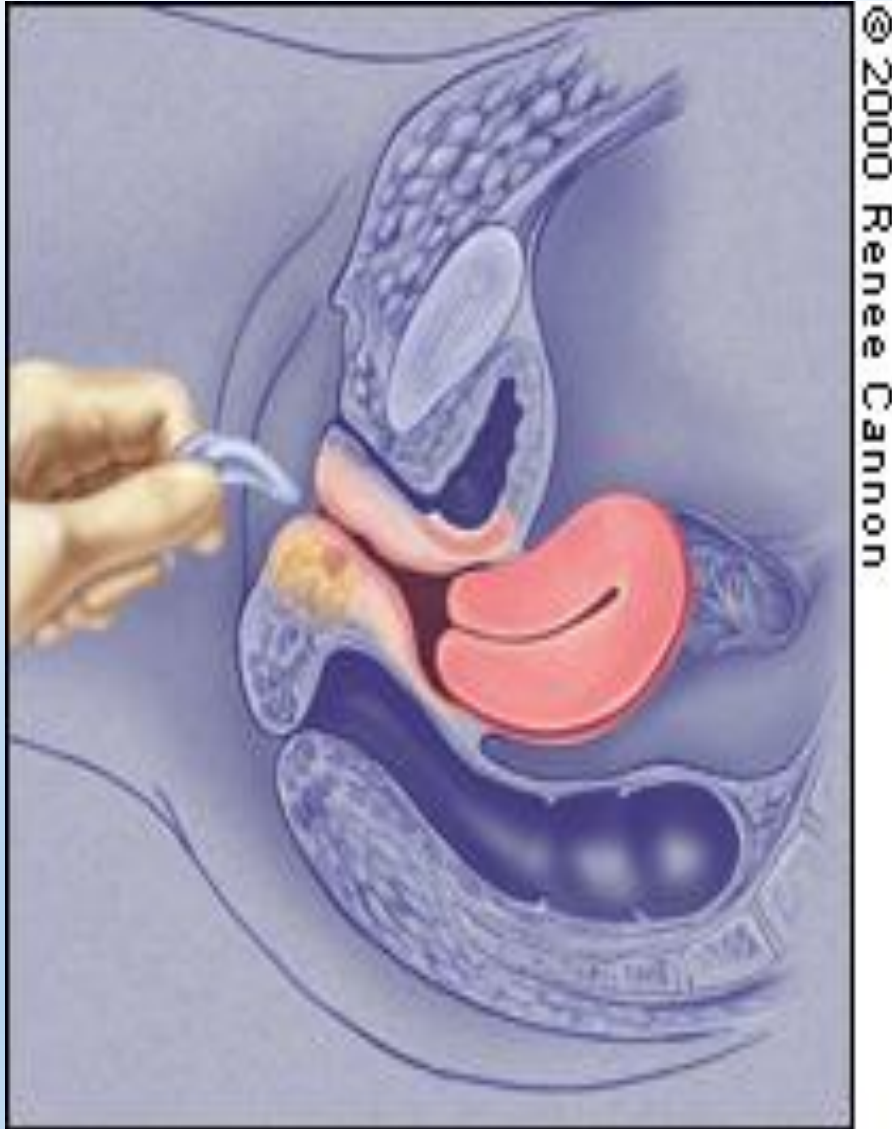
## ***Prolapse Types***



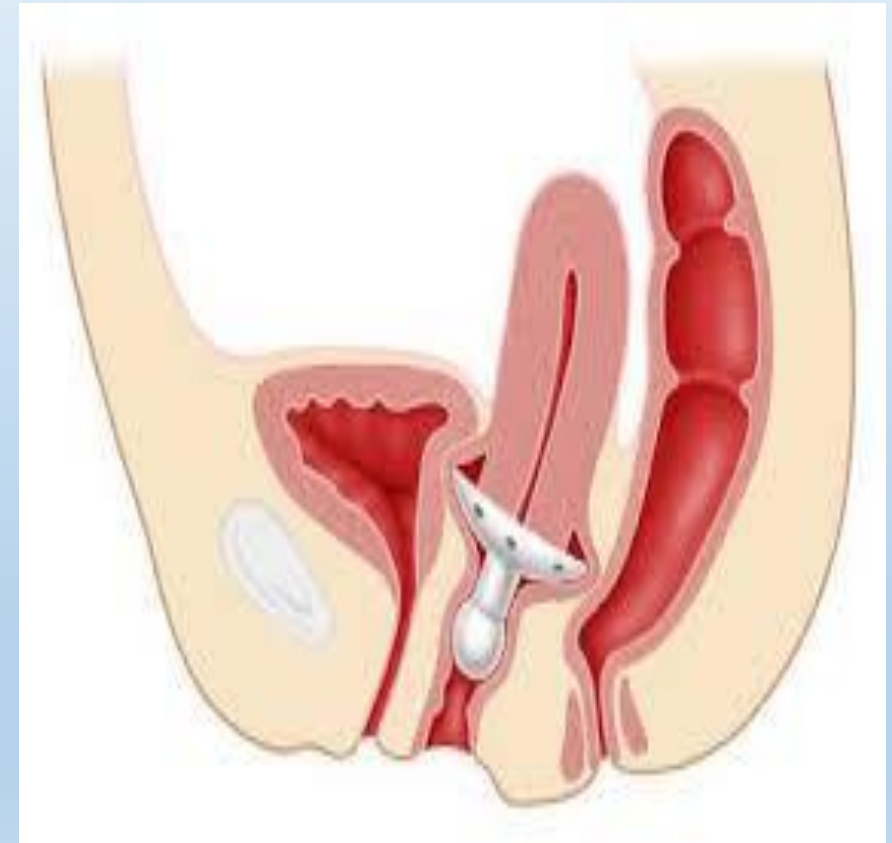
# TYPES OF PESSARIES



# INSERTION AND POSITION OF PESSARY



# INSERTION AND POSITION OF GELHORN PESSARY



# INDICATIONS FOR PESSARIES

- DO NOT WANT SURGERY- OR WANT TO DELAY IT
- WANTING TO HAVE MORE CHILDREN
- PREGNANT OR POSTPARTUM
- HAVE SEVERE PROLAPSE RELATED ULCERATIONS



# CONTRAINDICATIONS

- LOCAL INFECTION OF VAGINA OR PELVIS
- EXPOSED VAGINAL MESH
- NON-COMPLIANCE-
- UNDIAGNOSED VAGINAL BLEEDING

# COMPLICATIONS

- Vaginal discharge
- Constipation
- UTI's
- Vaginal bleeding
- Pain
- Erosion
- Recto-vaginal and vesicovaginal fistulae

# THE POEM



# REFERENCES

- Australasian Urogynecological Association
- UK Guideline for best practice in the use of vaginal pessaries for pelvic organ prolapse. 2021.